



Super

MULTI PLUS

R-410A



www.daikin.eu

AIR CONDITIONERS FOR YOUR HOME, APARTMENTS,
SHOPS, RESTAURANTS, OFFICES, HOTELS,...

ABOUT DAIKIN

Daikin has a worldwide reputation based on over 80 years' experience in the successful manufacture of high quality air conditioning equipment for industrial, commercial and residential use.



Daikin Europe N.V.

ENVIRONMENTAL AWARENESS

Enhancing the present - safeguarding the future

Throughout the last 50 years or so the basic building blocks of life - air, water and the earth - have been systematically subjected to increasing levels of pollution with little regard to their potentially devastating effects on future generations.

Recently however, concern has grown regarding climate changes, acid rain, water and air pollution and the constant degradation of Earth's natural resources. The very technology that created these problems is now being harnessed to halt and reverse them. Depletion of the ozone layer and global warming have been highlighted and are now being addressed. Government legislation prohibiting the use of toxic substances and the generation of pollutants has slowed down the

destruction of the environment.

Daikin Europe is proud to have been pro active in this respect, closely following its Japanese parent in implementing policies that have often pre-empted official legislative codes and directives. As a result, a culture of "environmental management" has since 2001, played a key role in the company's day to day activities and development strategies.

Top management commitment is reflected in the establishment of a number of action plans, which are now strictly observed and implemented throughout the Daikin Group.

In all of us,
a green heart



TABLE OF CONTENTS

Main features

› Flexible design & easy installation	4
› Super wide range of indoor units	6
› Super silent operation	8
› Advanced technologies	9

Selection procedure	10
----------------------------	----

System capacity table	12
------------------------------	----

Specifications indoor units	14
------------------------------------	----

› Stylish wall mounted unit	15
› Wall mounted unit (D serie)	16
› Wall mounted unit (C/F serie)	17
› Flexi type unit	18
› Floor standing unit	19
› Slim concealed ceiling unit	20
› Concealed ceiling unit	21
› Round flow cassette	22
› 4-way blow ceiling mounted cassette (600mm x 600mm)	23
› Ceiling suspended unit	24

Specifications outdoor units	25
-------------------------------------	----

Accessories	26
--------------------	----

Control Systems	28
------------------------	----

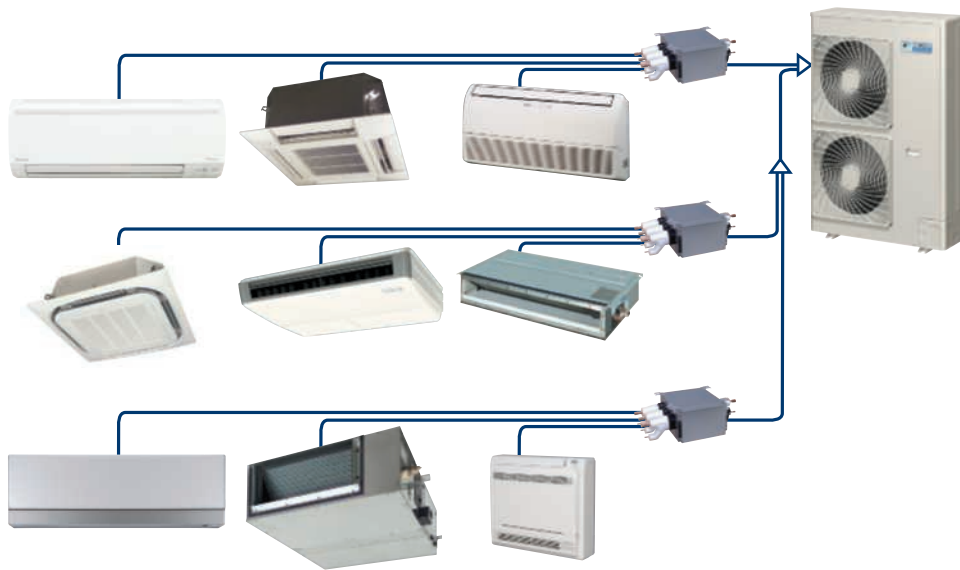


FLEXIBLE DESIGN & EASY INSTALLATION

The new Super Multi Plus E series is still connectable up to 9 indoor units. While the BP unit and the REFNET make the installation more simple, the longer piping length and simplified wiring broaden design flexibility.

› Simple piping

Thin refrigerant piping makes handling and connecting easier, resulting in significantly reduced installation time.



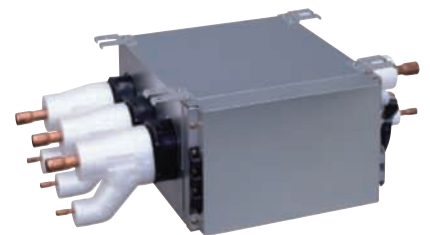
9 indoor units for a 15.5 kW installation

8 indoor units for a 14 kW installation

6 indoor units for a 11.2 kW installation

› BP unit

The BP unit varies the refrigerant volume to meet the cooling or heating requirements of a room. The improved BP unit is easier to disassemble, making repairing and recycling more simple.



› REFNET joint

The REFNET joint both reduces the amount of work involved in installation and increases the reliability of the system.



› Long piping length

A maximum total piping length of 145m, 20m longer than that of conventional model, offers much more flexibility in the choice of installation position for the indoor units and greatly simplifies system planning.

Piping length for RMXS140EV :

Total main piping length $\leq 55\text{m}$

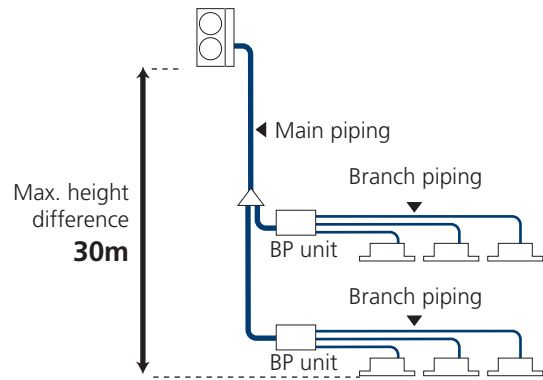
Total branch piping length $\leq 80\text{m}$

(= 20m longer than conventional model)

Total main and branch piping length $\leq 135\text{m}$

(55+80)

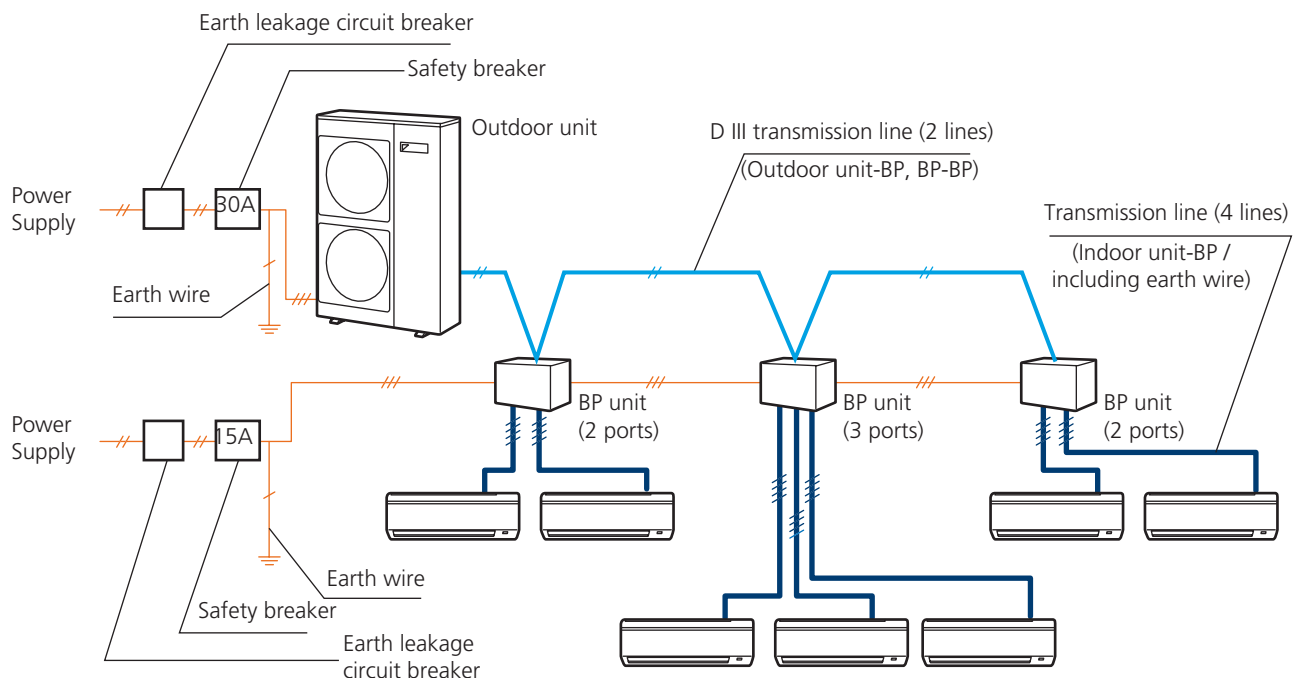
(= 20m longer than conventional model)



Note: System needs to be charged with refrigerant

› Simplified wiring

The outdoor unit and BP units draw single phase power supplies separately. As a consequence no power supply wiring is needed between the outdoor unit and BP units. The size of the wiring pipe from the outdoor unit to the BP units is reduced, making installation easier.



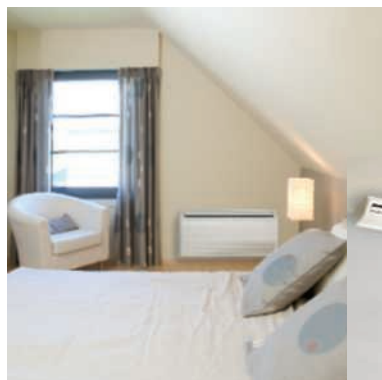
Super wide range of INDOOR UNITS

Whatever the air conditioning requirement, a Daikin indoor unit can provide the solution. This new Super Multi Plus outdoor unit can be combined with **11 different indoor unit models** in a total of **35 variations**.



Wall mounted unit

Floor standing unit



Flexi type unit

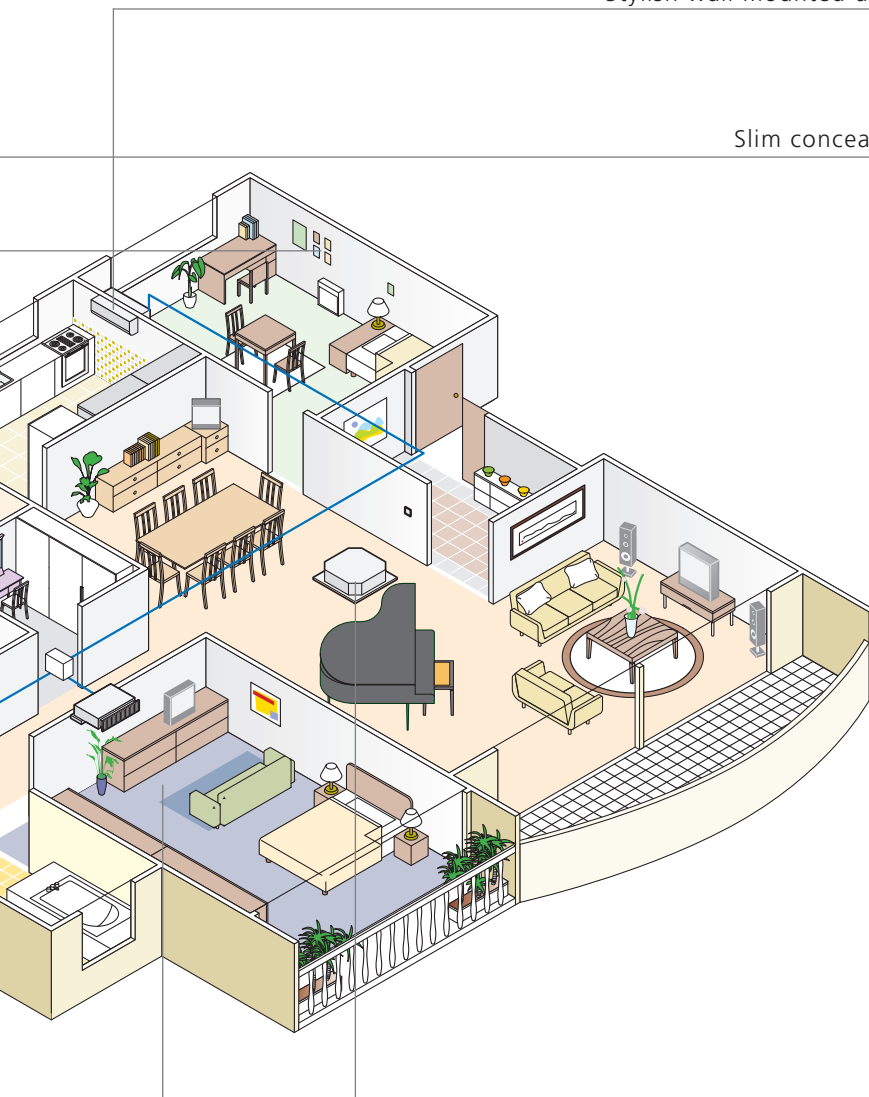
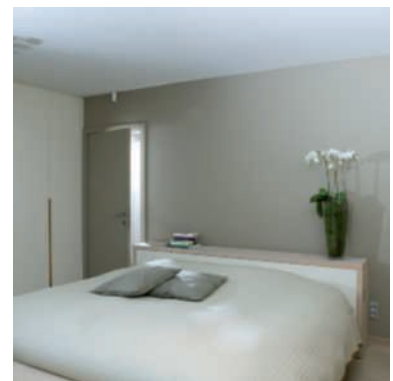


INDOOR UNITS	20 class	25 class	35 class	42 class	50 class	60 class	71 class
Stylish wall mounted unit		FTXG25E-WIS	FTXG35E-WIS		CTXG50E-WIS		
Wall mounted unit (G serie)	FTXS20G	FTXS25G	FTXS35G	FTXS42G	FTXS50G		
Wall mounted unit (F serie)						FTXS60F	FTXS71F
Floor standing unit		FVXS25F	FVXS35F		FVXS50F		
Flexi type unit		FLXS25B	FLXS35B		FLXS50B	FLXS60B	
Slim concealed ceiling unit		FDXS25E	FDXS35E		FDXS50C	FDXS60C	
Concealed ceiling unit		FDBQ25B	FBQ35B		FBQ50B	FBQ60B	
Round flow cassette			FCQ35C		FCQ50C	FCQ60C	
4-way blow ceiling mounted cassette		FFQ25B	FFQ35B		FFQ50B	FFQ60B	
Ceiling suspended cassette			FHQ35B		FHQ50B	FHQ60B	

Stylish wall mounted unit



Slim concealed ceiling unit



Round flow cassette

Ceiling suspended unit



Super silent OPERATION


Quietness is another important feature. To reduce noise and ensure comfortable operation, the latest technologies and features have been applied to the indoor and outdoor units.

› Indoor unit silent operation

The air flow volume of the E series can be set in 5 steps, including silent and auto mode. It is also equipped with Indoor Unit Silent Operation, ideally suited to bedroom air conditioning. This function decreases operation sound from the low speed setting by 3 dB(A) by minimizing the air flow volume. The result is the industry low indoor unit sound level of 22 dB(A) (= 5 dB(A) lower than conventional models)

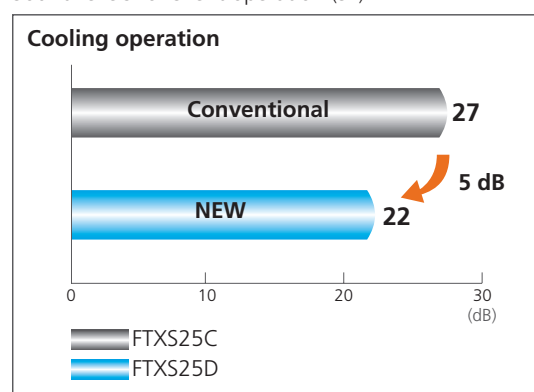
Note: Capacity may decrease when Indoor Unit Silent Operation is selected.

FTXS25D

Fan speed	Sound levels
High (H)	38 dB
Low (L)	25 dB
 Silent (SL)	22 dB

During cooling operation

Sound levels for Silent operation (SL)



› Night quiet mode (max. -9 dB(A))

During the night the sound level of the outdoor unit can be reduced for a certain period: starting time and ending time can be input

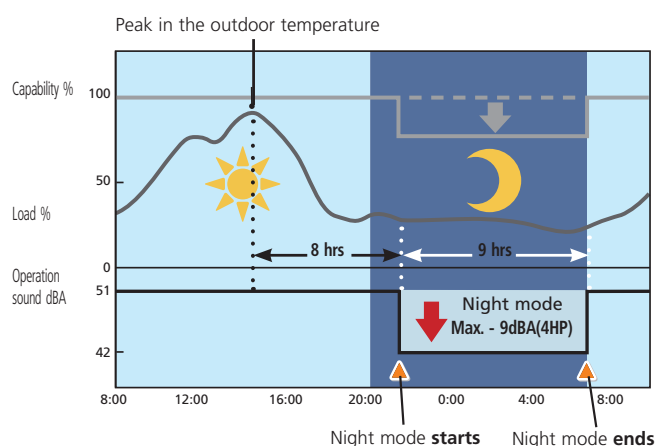
2 modes*1 with low operating sound level at night:

› Mode 1 Automatic mode

Set on the outdoor PCB. Time of maximum temperature is memorised. The low operating mode will become active 8 hours*2 after the peak temperature in the daytime and operation will return to normal after 9 hours*3.

› Mode 2 Customized mode

Starting and ending times can be input. (External control adapter for outdoor unit, DTA104A61 or DTA104A62 and a separately ordered timer are necessary.)



Notes:

- This function is available for on site setting.
- The relationship between outdoor temperature (load) and time shown in the graph is merely an example.

Notes:

*1. Determine which mode to select depending on the climatic characteristics of each country.

*2. Initial setting. Can be selected from 6, 8 and 10 hours.

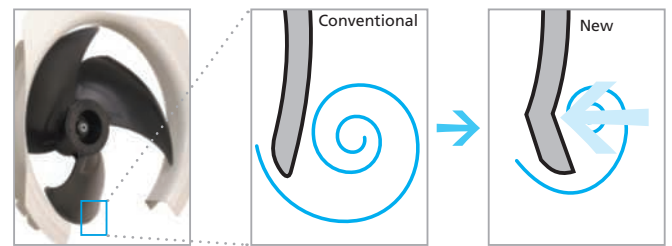
*3. Initial setting. Can be selected from 8, 9 and 10 hours.

ADVANCED TECHNOLOGIES

› Smooth air inlet bell mouse & Aero spiral fan

These new features assist in significantly reducing noise. Guides are added to the bell mouth intake to reduce turbulence in the air flow generated by fan suction. The new aero spiral fan features fan blades with bent blade edges, further reducing turbulence.

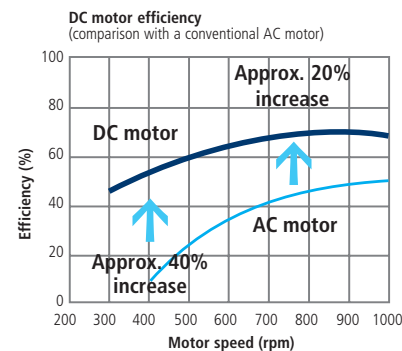
New aero spiral fan blade tips



Escaping edges are sucked in by the bent blade edges, reducing overall turbulence.

› DC fan motor

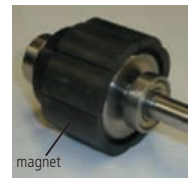
The use of a DC fan motor offers substantial improvements in operating efficiency compared to conventional AC motors, especially during low speed rotation.



Note:
Data are based on studies conducted under controlled conditions at a Daikin laboratory.



DC fan motor structure



magnet

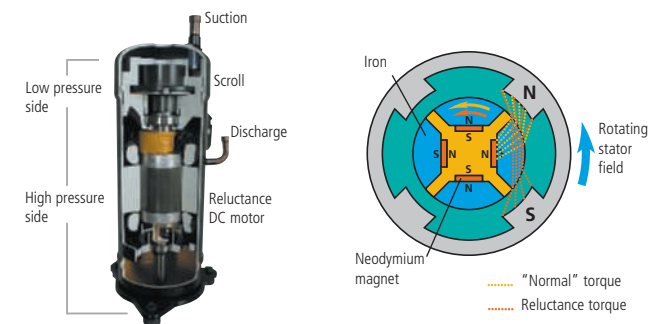
› Super aero grille

The spiral shaped ribs are aligned with the direction of discharge flow in order to minimise turbulence and reduce noise.

› Reluctance DC scroll compressor

The reluctance brushless DC motor provides significant increases in efficiency compared to conventional AC inverter motors, simultaneously using two different forms of torque (normal and reluctance torque) to produce extra power from small electric currents.

The motor comprises powerful neodymium magnets that create the reluctance torque. These magnets are approximately 12 times stronger than ferrite types and make a major contribution to its energy saving characteristics.



Neodymium magnet

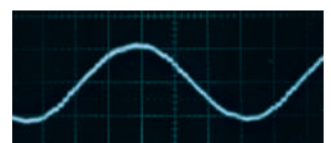
Ferrite magnet

› SC heat exchanger

Optimization of the layout path of the heat exchanger reduces refrigerant flow sound.

› Smooth sine wave DC inverter

Optimizing the sine wave curve results in smoother motor rotation and improved motor efficiency.



SELECTION PROCEDURE

Number of indoor units

1 to 9 units

Total indoor unit capacity

50% to 130%

of nominal out-
door capacity

Number of BP units

1 to 3 units

INDOOR UNITS	FTXG-E/CTXG-E			FTXS-G/F							FVXS-B			FLXS-B				FDXS-E/C				FDBQ-B	FBQ-BFCQ-B/FFQ-B/FHQ-B			
Indoor Class	25	35	50	20	25	35	50	60	71	25	35	50	25	35	50	60	25	35	50	60	25	25	35	50	60	
System Capacity	2.5	3.5	5.0	2.0	2.5	3.5	5.0	6.0	7.1	2.5	3.5	5.0	2.5	3.5	5.0	6.0	2.5	3.5	5.0	6.0	2.5	2.5	3.5	5.0	6.0	

Capacity of each indoor unit = $\frac{\text{Capacity calculated on the table below} \times \text{system capacity of each indoor unit}}{\text{Total system capacity of the indoor units}}$

For Example:

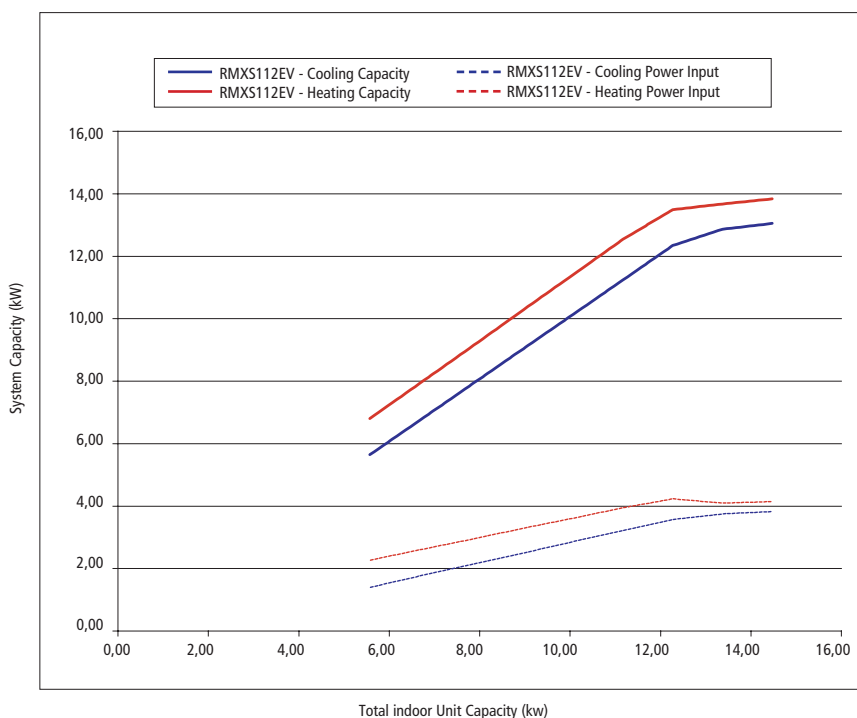
for a RMXS140EV :

Total system capacity = of the indoor units

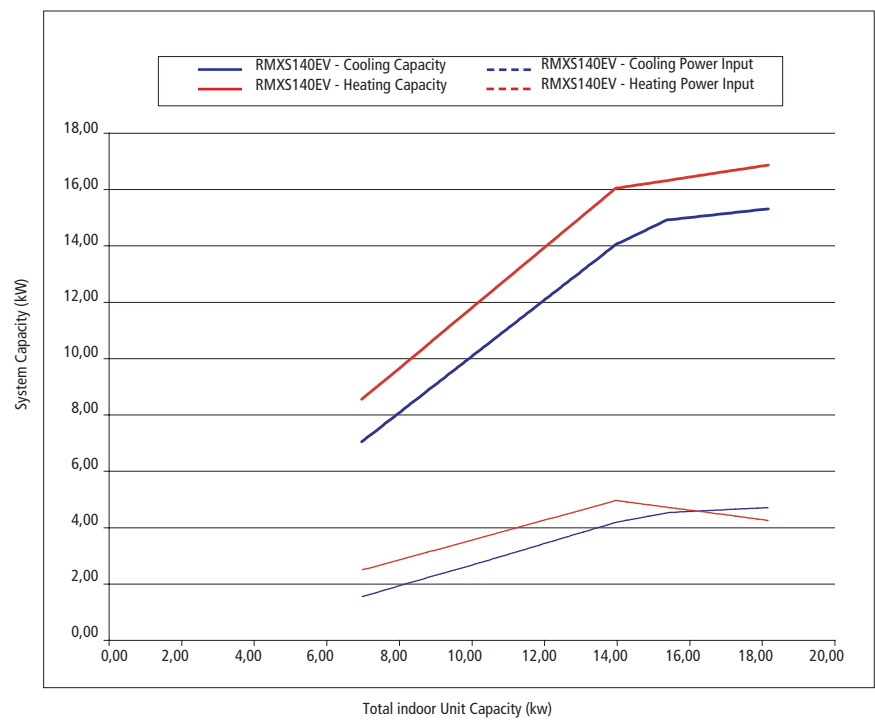
FTXS25G	+	FTXS35G	+	FVXS50F	+	FBQ60B	
2.5	+	3.5	+	5.0	+	6.0	= 17 < 18.2

Cooling capacity of FTXS25G	=	$\frac{15 \times 2.5}{17} = 2.2$	Cooling capacity of FVXS50F	=	$\frac{15 \times 5.0}{17} = 4.41$
Cooling capacity of FTXS35G	=	$\frac{15 \times 3.5}{17} = 3.08$	Cooling capacity of FBQ60B	=	$\frac{15 \times 6.0}{17} = 5.29$

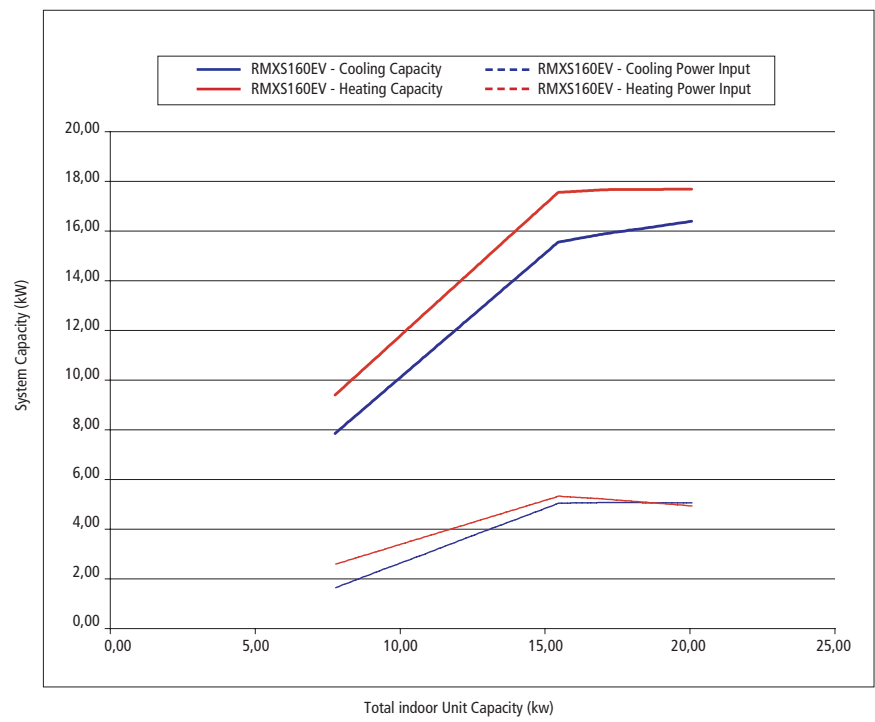
RMXS112EV:



RMXS140EV:



RMXS160EV:



SYSTEM CAPACITY TABLE

RMXS112EV							RMXS140EV				RMXS160EV			
TOTAL INDOOR CAPACITY	COOLING			HEATING			COOLING		HEATING		COOLING		HEATING	
	CAPACITY	POWER INPUT	EER/ELD/AEC	CAPACITY	POWER INPUT	EER/ELD/AEC	CAPACITY	POWER INPUT	CAPACITY	POWER INPUT	CAPACITY	POWER INPUT	CAPACITY	POWER INPUT
	KW	KW	- / - / kWh	KW	KW	- / - / kWh	KW	KW	KW	KW	KW	KW	KW	KW
5.60	5.60	1.38	4.06/A/690	6.76	2.25	3.00/D/1,125								
5.70	5.70	1.41	4.03/A/707	6.86	2.28	3.01/D/1,140								
5.80	5.80	1.45	4.01/A/723	6.96	2.31	3.01/D/1,155								
5.90	5.90	1.48	3.99/A/740	7.07	2.34	3.02/D/1,170								
6.00	6.00	1.51	3.97/A/756	7.17	2.37	3.02/D/1,185								
6.10	6.10	1.55	3.95/A/773	7.27	2.40	3.03/D/1,200								
6.20	6.20	1.58	3.93/A/789	7.37	2.43	3.03/D/1,215								
6.30	6.30	1.61	3.91/A/806	7.48	2.46	3.04/D/1,230								
6.40	6.40	1.64	3.89/A/822	7.58	2.49	3.04/D/1,246								
6.50	6.50	1.68	3.87/A/839	7.68	2.52	3.05/D/1,261								
6.60	6.60	1.71	3.86/A/856	7.78	2.55	3.05/D/1,276								
6.70	6.70	1.74	3.84/A/872	7.88	2.58	3.05/D/1,291								
6.80	6.80	1.78	3.83/A/888	7.99	2.61	3.06/D/1,305								
6.90	6.90	1.81	3.81/A/904	8.09	2.64	3.06/D/1,320								
7.00	7.00	1.84	3.80/A/921	8.19	2.67	3.07/D/1,335	7.00	1.53	8.51	2.48				
7.10	7.10	1.87	3.79/A/937	8.29	2.70	3.07/D/1,350	7.10	1.57	8.62	2.52				
7.20	7.20	1.91	3.78/A/953	8.39	2.73	3.08/D/1,364	7.20	1.61	8.72	2.55				
7.30	7.30	1.94	3.77/A/969	8.49	2.76	3.08/D/1,379	7.30	1.64	8.83	2.59				
7.40	7.40	1.97	3.76/A/985	8.60	2.79	3.08/D/1,394	7.40	1.68	8.94	2.62				
7.50	7.50	2.00	3.75/A/1,001	8.70	2.82	3.09/D/1,408	7.50	1.72	9.04	2.66				
7.60	7.60	2.03	3.74/A/1,017	8.80	2.85	3.09/D/1,423	7.60	1.76	9.15	2.69				
7.70	7.70	2.07	3.73/A/1,033	8.90	2.88	3.10/D/1,438	7.70	1.80	9.26	2.73				
7.80	7.80	2.10	3.72/A/1,050	9.00	2.91	3.10/D/1,453	7.80	1.83	9.36	2.76	7.80	1.62	9.35	2.57
7.90	7.90	2.13	3.71/A/1,066	9.11	2.94	3.10/D/1,468	7.90	1.87	9.47	2.80	7.90	1.66	9.45	2.60
8.00	8.00	2.16	3.70/A/1,081	9.21	2.97	3.10/D/1,483	8.00	1.91	9.57	2.83	8.00	1.71	9.56	2.64
8.10	8.10	2.19	3.69/A/1,097	9.31	3.00	3.11/D/1,499	8.10	1.95	9.68	2.87	8.10	1.75	9.66	2.67
8.20	8.20	2.23	3.68/A/1,113	9.42	3.03	3.11/D/1,514	8.20	1.98	9.79	2.90	8.20	1.80	9.77	2.71
8.30	8.30	2.26	3.68/A/1,129	9.52	3.06	3.11/D/1,530	8.30	2.02	9.89	2.94	8.30	1.84	9.87	2.74
8.40	8.40	2.29	3.67/A/1,145	9.62	3.09	3.11/D/1,545	8.40	2.06	10.00	2.97	8.40	1.89	9.98	2.78
8.50	8.50	2.32	3.66/A/1,161	9.73	3.12	3.12/D/1,560	8.50	2.10	10.11	3.01	8.50	1.93	10.09	2.81
8.60	8.60	2.35	3.65/A/1,177	9.83	3.15	3.12/D/1,576	8.60	2.13	10.22	3.04	8.60	1.98	10.19	2.85
8.70	8.70	2.39	3.65/A/1,193	9.94	3.18	3.12/D/1,591	8.70	2.17	10.32	3.08	8.70	2.02	10.30	2.89
8.80	8.80	2.42	3.64/A/1,209	10.04	3.21	3.12/D/1,606	8.80	2.21	10.43	3.11	8.80	2.07	10.40	2.92
8.90	8.90	2.45	3.63/A/1,225	10.14	3.24	3.13/D/1,622	8.90	2.24	10.54	3.15	8.90	2.11	10.51	2.96
9.00	9.00	2.48	3.63/A/1,241	10.25	3.27	3.13/D/1,637	9.00	2.28	10.65	3.18	9.00	2.16	10.61	2.99
9.10	9.10	2.51	3.62/A/1,257	10.35	3.30	3.13/D/1,652	9.10	2.31	10.75	3.22	9.10	2.20	10.72	3.03
9.20	9.20	2.55	3.61/A/1,274	10.45	3.33	3.14/D/1,667	9.20	2.35	10.86	3.25	9.20	2.25	10.82	3.06
9.30	9.30	2.58	3.60/A/1,290	10.55	3.36	3.14/D/1,681	9.30	2.39	10.97	3.29	9.30	2.29	10.93	3.10
9.40	9.40	2.61	3.60/A/1,307	10.65	3.39	3.14/D/1,696	9.40	2.42	11.08	3.32	9.40	2.33	11.04	3.14
9.50	9.50	2.65	3.59/A/1,323	10.76	3.42	3.14/D/1,710	9.50	2.46	11.19	3.36	9.50	2.38	11.14	3.17
9.60	9.60	2.68	3.58/A/1,340	10.86	3.45	3.15/D/1,725	9.60	2.50	11.29	3.39	9.60	2.42	11.25	3.21
9.70	9.70	2.71	3.58/A/1,356	10.96	3.48	3.15/D/1,740	9.70	2.53	11.40	3.43	9.70	2.46	11.36	3.24
9.80	9.80	2.75	3.57/A/1,373	11.06	3.51	3.15/D/1,754	9.80	2.57	11.51	3.46	9.80	2.51	11.46	3.28
9.90	9.90	2.78	3.56/A/1,389	11.17	3.54	3.16/D/1,769	9.90	2.61	11.62	3.50	9.90	2.55	11.57	3.31
10.00	10.00	2.81	3.56/A/1,406	11.27	3.57	3.16/D/1,784	10.00	2.64	11.72	3.53	10.00	2.59	11.68	3.35
10.10	10.10	2.85	3.55/A/1,423	11.37	3.60	3.16/D/1,798	10.10	2.68	11.83	3.57	10.10	2.64	11.78	3.38
10.20	10.20	2.88	3.54/A/1,439	11.47	3.63	3.16/D/1,813	10.20	2.72	11.94	3.60	10.20	2.68	11.89	3.42
10.30	10.30	2.91	3.54/A/1,455	11.58	3.66	3.17/D/1,829	10.30	2.76	12.05	3.64	10.30	2.72	11.99	3.46
10.40	10.40	2.94	3.54/A/1,471	11.68	3.69	3.17/D/1,844	10.40	2.80	12.15	3.67	10.40	2.77	12.10	3.49
10.50	10.50	2.97	3.53/A/1,487	11.78	3.72	3.17/D/1,859	10.50	2.83	12.26	3.71	10.50	2.81	12.21	3.53
10.60	10.60	3.01	3.53/A/1,503	11.88	3.75	3.17/D/1,874	10.60	2.87	12.37	3.75	10.60	2.85	12.31	3.56
10.70	10.70	3.04	3.52/A/1,519	11.99	3.78	3.17/D/1,889	10.70	2.91	12.47	3.78	10.70	2.90	12.42	3.60
10.80	10.80	3.07	3.52/A/1,535	12.09	3.81	3.17/D/1,904	10.80	2.95	12.58	3.82	10.80	2.94	12.53	3.63
10.90	10.90	3.10	3.51/A/1,552	12.19	3.84	3.18/D/1,920	10.90	2.99	12.69	3.85	10.90	2.99	12.63	3.67
11.00	11.00	3.14	3.51/A/1,568	12.29	3.87	3.18/D/1,935	11.00	3.02	12.79	3.89	11.00	3.03	12.74	3.70
11.10	11.10	3.17	3.50/A/1,584	12.40	3.90	3.18/D/1,950	11.10	3.06	12.90	3.92	11.10	3.08	12.85	3.74
11.20	11.20	3.20	3.50/A/1,600	12.50	3.93	3.18/D/1,965	11.20	3.10	13.01	3.96	11.20	3.12	12.95	3.77
11.30	11.30	3.23	3.50/A/1,616	12.59	3.96	3.18/D/1,978	11.30	3.14	13.12	4.00	11.30	3.17	13.06	3.81
11.40	11.40	3.26	3.49/A/1,632	12.67	3.98	3.18/D/1,991	11.40	3.18	13.22	4.03	11.40	3.21	13.16	3.85
11.50	11.50	3.30	3.49/A/1,648	12.76	4.01	3.18/D/2,004	11.50	3.22	13.33	4.07	11.50	3.26	13.27	3.88
11.60	11.60	3.33	3.48/A/1,664	12.85	4.03	3.18/D/2,017	11.60	3.25	13.44	4.10	11.60	3.30	13.37	3.92
11.70	11.70	3.36	3.48/A/1,681	12.93	4.06	3.19/D/2,029	11.70	3.29	13.54	4.14	11.70	3.35	13.48	3.95
11.80	11.80	3.39	3.48/A/1,697	13.02	4.08	3.19/D/2,042	11.80	3.33	13.65	4.17	11.80	3.39	13.59	3.99
11.90	11.90	3.43	3.47/A/1,713	13.10	4.11	3.19/D/2,055	11.90	3.37	13.75	4.21	11.90	3.44	13.69	4.02
12.00	12.00	3.46	3.47/A/1,729	13.19	4.14	3.19/D/2,068	12.00	3.41	13.86	4.24	12.00	3.48	13.80	4.06
12.10	12.10	3.49	3.47/A/1,745	13.28	4.16	3.19/D/2,081	12.10	3.45	13.97	4.28	12.10	3.53	13.90	4.09
12.20	12.20	3.52	3.46/A/1,761	13.36	4.19	3.19/D/2,094	12.20	3.49	14.07	4.31	12.20	3.57	14.01	4.13
12.30	12.30	3.55	3.46/A/1,777	13.45	4.21	3.19/D/2,107	12.30	3.52	14.18	4.35	12.30	3.62	14.11	4.16
12.40	12.35	3.57	3.46/A/1,785	13.47	4.20	3.21/C/2,100	12.40	3.56	14.29	4.38	12.40	3.66	14.22	4.20
12.50	12.40	3.59	3.46/A/1,793	13.48	4.19	3.22/C/2,094	12.50	3.60	14.39	4.42	12.50	3.70	14.33	4.24
12.60	12.44	3.60	3.45/A/1,801	13.50	4.18	3.23/C/2,088	12.60	3.64	14.50	4.45	12.60	3.75	14.43	4.27
12.70	12.49	3.62	3.45/A/1,809	13.51	4.16	3.25/C/2,081	12.70	3.68	14.61	4.49	12.70	3.79	14.54	4.31
12.80	12.54	3.63	3.45/A/1,817	13.53	4.15	3.26/C/2,075	12.80	3.72	14.71	4.52	12.80	3.83	14.65	4.34
12.90	12.59	3.65	3.45/A/1,825	13.55	4.14	3.27/C/2,069	12.90	3.75	14.82	4.56	12.90	3.88	14.75	4.38
13.00	12.63	3.67	3.45/A/1,833	13.56	4.12	3.29/C/2,062	13.00	3.79	14.93	4.59	13.00	3.92	14.86	4.41
13.10	12.68	3.68	3.44/A/1,841	13.58	4.11	3.30/C/2,056	13.10	3.83	15.04	4.63	13.10	3.96	14.96	4.45
13.20	12.73	3.70	3.44/A/1,849	13.60	4.10	3.32/C/2,050	13.20	3.87	15.14	4.66	13.20	4.01	15.07	4.48
13.30	12.77	3.71	3.44/A/1,857	13.61	4.09	3.33/C/2,043	13.30	3.91	15.25	4.70	13.30	4.05	15.18	4.52

RMXS112EV							RMXS140EV				RMXS160EV			
TOTAL INDOOR CAPACITY	COOLING			HEATING			COOLING		HEATING		COOLING		HEATING	
	CAPACITY	POWER INPUT	EER/ELD/AEC	CAPACITY	POWER INPUT	EER/ELD/AEC	CAPACITY	POWER INPUT	CAPACITY	POWER INPUT	CAPACITY	POWER INPUT	CAPACITY	POWER INPUT
	KW	KW	- / - / kWh	KW	KW	- / - / kWh	KW	KW	KW	KW	KW	KW	KW	KW
13.40	12.82	3.73	3.44/A/1,865	13.63	4.07	3.35/C/2,037	13.40	3.94	15.36	4.73	13.40	4.10	15.28	4.56
13.50	12.84	3.74	3.44/A/1,868	13.64	4.08	3.35/C/2,039	13.50	3.98	15.46	4.77	13.50	4.14	15.39	4.59
13.60	12.86	3.74	3.43/A/1,871	13.66	4.08	3.35/C/2,042	13.60	4.02	15.57	4.80	13.60	4.18	15.50	4.63
13.70	12.87	3.75	3.43/A/1,875	13.67	4.09	3.35/C/2,044	13.70	4.06	15.68	4.84	13.70	4.23	15.60	4.66
13.80	12.89	3.76	3.43/A/1,878	13.69	4.09	3.35/C/2,046	13.80	4.09	15.79	4.87	13.80	4.27	15.71	4.70
13.90	12.91	3.76	3.43/A/1,882	13.70	4.10	3.35/C/2,048	13.90	4.13	15.89	4.91	13.90	4.31	15.82	4.73
14.00	12.92	3.77	3.43/A/1,885	13.72	4.10	3.35/C/2,050	14.00	4.17	16.00	4.94	14.00	4.36	15.92	4.77
14.10	12.94	3.78	3.43/A/1,888	13.73	4.11	3.35/C/2,053	14.06	4.19	16.02	4.92	14.10	4.40	16.03	4.80
14.20	12.96	3.78	3.42/A/1,892	13.75	4.11	3.35/C/2,055	14.12	4.22	16.04	4.91	14.20	4.45	16.13	4.84
14.30	12.97	3.79	3.42/A/1,895	13.76	4.11	3.35/C/2,057	14.19	4.24	16.06	4.89	14.30	4.49	16.24	4.87
14.40	12.99	3.80	3.42/A/1,899	13.78	4.12	3.35/C/2,059	14.25	4.27	16.08	4.87	14.40	4.53	16.34	4.91
14.50	13.01	3.80	3.42/A/1,902	13.79	4.12	3.35/C/2,062	14.31	4.29	16.10	4.85	14.50	4.58	16.45	4.95
14.60							14.37	4.32	16.12	4.84	14.60	4.62	16.55	4.98
14.70							14.44	4.34	16.13	4.82	14.70	4.67	16.66	5.02
14.80							14.50	4.36	16.15	4.80	14.80	4.71	16.76	5.05
14.90							14.56	4.39	16.17	4.79	14.90	4.75	16.87	5.09
15.00							14.62	4.41	16.19	4.77	15.00	4.80	16.97	5.12
15.10							14.68	4.44	16.21	4.75	15.10	4.84	17.08	5.16
15.20							14.75	4.46	16.23	4.73	15.20	4.89	17.18	5.19
15.30							14.81	4.49	16.25	4.72	15.30	4.93	17.29	5.23
15.40							14.87	4.51	16.27	4.70	15.40	4.98	17.39	5.26
15.50							14.88	4.52	16.29	4.68	15.50	5.02	17.50	5.30
15.60							14.90	4.52	16.31	4.67	15.52	5.02	17.51	5.29
15.70							14.91	4.53	16.33	4.65	15.54	5.02	17.51	5.29
15.80							14.93	4.54	16.35	4.63	15.56	5.02	17.52	5.28
15.90							14.94	4.54	16.37	4.62	15.58	5.03	17.53	5.27
16.00							14.96	4.55	16.39	4.60	15.61	5.03	17.53	5.26
16.10							14.97	4.56	16.41	4.59	15.63	5.03	17.54	5.26
16.20							14.98	4.56	16.43	4.57	15.65	5.03	17.55	5.25
16.30							15.00	4.57	16.45	4.55	15.67	5.03	17.56	5.24
16.40							15.01	4.57	16.47	4.54	15.69	5.03	17.56	5.24
16.50							15.03	4.58	16.49	4.52	15.71	5.04	17.57	5.23
16.60							15.04	4.59	16.51	4.50	15.73	5.04	17.58	5.22
16.70							15.06	4.59	16.53	4.49	15.75	5.04	17.58	5.21
16.80							15.07	4.60	16.55	4.47	15.77	5.04	17.59	5.21
16.90							15.08	4.61	16.57	4.45	15.79	5.04	17.60	5.20
17.00							15.10	4.61	16.59	4.44	15.82	5.04	17.60	5.19
17.10							15.11	4.62	16.61	4.42	15.84	5.04	17.61	5.19
17.20							15.13	4.63	16.63	4.40	15.85	5.04	17.61	5.18
17.30							15.14	4.63	16.65	4.38	15.87	5.04	17.61	5.17
17.40							15.16	4.64	16.67	4.37	15.89	5.04	17.61	5.16
17.50							15.17	4.65	16.69	4.35	15.90	5.04	17.61	5.15
17.60							15.18	4.65	16.70	4.33	15.92	5.04	17.61	5.14
17.70							15.20	4.66	16.72	4.32	15.93	5.04	17.61	5.13
17.80							15.21	4.66	16.74	4.30	15.95	5.04	17.62	5.12
17.90							15.23	4.67	16.76	4.28	15.97	5.04	17.62	5.11
18.00							15.24	4.68	16.78	4.26	15.98	5.04	17.62	5.10
18.10							15.26	4.68	16.80	4.25	16.00	5.04	17.62	5.10
18.20							15.27	4.69	16.82	4.23	16.02	5.04	17.62	5.09
18.30											16.03	5.04	17.62	5.08
18.40											16.05	5.04	17.62	5.07
18.50											16.06	5.04	17.62	5.06
18.60											16.08	5.04	17.62	5.05
18.70											16.10	5.04	17.62	5.04
18.80											16.11	5.04	17.62	5.03
18.90											16.13	5.04	17.62	5.02
19.00											16.15	5.04	17.62	5.01
19.10											16.17	5.04	17.63	5.00
19.20											16.18	5.03	17.63	4.99
19.30											16.20	5.03	17.63	4.98
19.40											16.22	5.03	17.63	4.97
19.50											16.24	5.03	17.63	4.96
19.60											16.25	5.03	17.63	4.96
19.70											16.27	5.03	17.63	4.95
19.80											16.29	5.03	17.63	4.94
19.90											16.30	5.03	17.63	4.93
20.00											16.32	5.03	17.64	4.92
20.10											16.34	5.03	17.64	4.91

Note 1 : The system capacities above show the rise in the total indoor unit capacity when operating frequency is constant. Values for changes in system capacity are fixed after accounting for variations in operating frequency and should be used as reference values.

Note 2 : COP: Coefficient of performance / EER: Energy efficiency ratio / ELD: Energy label / AEC: Annual energy consumption.

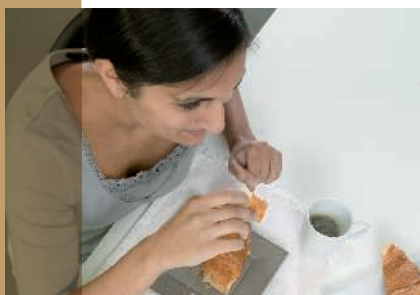
Note 3 : This capacity table is only valid for the nominal testing conditions: cooling: 35°C outdoor temperature and 19°C indoor temperature / heating: 6°C outdoor temperature and 20°C indoor temperature

SPECIFICATIONS
Indoor UNITS



FTXG-E & CTXG-E

Wall mounted unit



Comfort

- › Stylish and modern design
- › Available in 2 colour variations
- › Comfort mode reassures draught free operation
- › Extremely quiet in operation

Filter

- › Titanium apatite photocatalytic air purification filter powerfully absorbs microscopic particles, decomposes odours and even deactivates bacteria and viruses

Energy efficient

- › ECONO mode decreases the power consumption so that other appliances that need large power consumption can be used
- › Movement sensor automatically saves power consumption in unoccupied rooms

HEAT PUMP (air cooled)				FTXG25E-W/S	FTXG35E-W/S	CTXG50E-W/S
Dimensions	HxWxD	mm		275x840x150		
Weight		kg		9		
Front panel colour				Mat crystal white (W) or mat crystal silver (S)		
Air flow rate	cooling	H/L/SL	m³/min	7.7/4.7/3.8	8.1/4.9/4.1	11.3/7.1/6.7
	heating	H/L/SL	m³/min	9.0/6.7/5.4	9.6/6.7/5.9	12.6/8.7/7.7
Fan speed			steps	5 steps, silent and auto		
Sound pressure level	cooling	H/L/SL	dB(A)	38/25/22	39/26/23	47/35/32
	heating	H/L/SL	dB(A)	38/28/25	39/29/26	47/35/32
Sound power level	cooling	H	dB(A)	56	57	64
Piping connections	liquid	mm		ø6.4		
	gas	mm		ø9.5		ø12.7
	drain	mm		ø18.0		
Heat insulation				Both liquid and gas pipes		
Power supply		V1		1~, 220-240V, 50Hz		
Infrared remote control				ARC433A41		

FTXS-G

Wall mounted unit



Comfort

- › Comfort mode reassures draught free operation
- › Extremely quiet in operation
- › 2 area intelligent eye: air flow is sent to the area in a room where no person is detected
- › 3D air flow

Filter

- › Titanium apatite photocatalytic air purification filter powerfully absorbs microscopic particles, decomposes odours and even deactivates bacteria and viruses.

Energy efficient

- › ECONO mode decreases the power consumption so that other appliances that need large power consumption can be used
- › Energy saving during operation stand bymode: reduction of energy from 10W to 2W

COOLING ONLY / HEAT PUMP				FTXS20G	FTXS25G	FTXS35G	FTXS42G	FTXS50G
Dimensions	HxWxD	mm		295x800x215				
Weight		kg		9	9	10	10	10
Colour				White				
Air flow rate	cooling	H/L	dB(A)	9.4/5.5	9.1/5.2	10.4/4.8	9.1/6.3	10.2/7.0
	heating			9.9/6.5	9.8/6.2	10.6/6.4	11.2/7.7	11.0/7.6
Fan speed				5 steps, silent and auto				
Sound pressure level	cooling	H/M/L/SL	dB(A)	38/32/25/22	38/32/25/22	42/34/26/23	42/38/33/30	43/39/34/31
	heating			38/33/28/25	39/34/28/25	42/36/29/26	42/38/33/30	44/39/34/31
Sound power level	cooling	H	dB(A)	54	54	58	58	59
Piping connections	liquid	mm		ø6.4				
	gas	mm		ø9.5	ø9.5	ø9.5	ø9.5	ø12.7
Heat insulation				Both liquid and gas pipes				
Infrared remote control				ARC452A3				

FTXS-F

Wall mounted unit



Comfort

- › F-serie: 3-D air flow makes sure that a uniform temperature is achieved throughout the room
- › Extremely quiet in operation

Filter

- › Air purification filter with photocatalytic deodorising function absorbs microscopic particles, decomposes odours and even deactivates bacteria and viruses

Energy efficient

- › Home leave operation saves energy during absence
- › Movement sensor automatically saves power consumption in unoccupied rooms

HEAT PUMP (air cooled)				FTXS60F	FTXS71F
Dimensions	HxWxD	mm		290x1,050x238	
Weight		kg		12	
Front panel colour				white	
Air flow rate*	cooling	H/L	dB(A)	16.8 (H)	16.2 (H)
	heating			17.4 (H)	18.2 (H)
Fan speed				5 steps, silent and auto	
Sound pressure level	cooling	H/L	dB(A)	45/36	46/37
	heating			44/35	46/37
Sound power level	cooling	H	dB(A)	61	62
Piping connections	liquid	mm		ø6.4	
	gas	mm		ø12.7	
Heat insulation				Both liquid and gas pipes	
Power supply				1~,220-240,50Hz	
Infrared remote control				ARC433A70	

FLXS-B

Flexi type unit



Comfort

- › Vertical auto swing and wide angle louvers ensure that warm air reaches the furthest corners of a room and increase the air flow coverage
- › Extremely quiet in operation

Filter

- › Air purification filter with photocatalytic deodorising function absorbs microscopic particles, decomposes odours and even deactivates bacteria and viruses

Energy efficient

- › Home leave operation saves energy during absence

Flexible installation

- › Allows both ceiling suspended as floor level installation

HEAT PUMP (air cooled)				FLXS25B	FLXS35B	FLXS50B	FLXS60B
Dimensions	HxWxD	mm	490x1,050x200				
Weight		kg		16	16	17	17
Front panel colour				Almond white			
Air flow rate	cooling	H/L/SL	m³/min	7.6/6.0/5.2	8.6/6.6/5.6	11.4/8.5/7.5	12.0/9.3/8.3
	heating	H/L/SL	m³/min	9.2/7.4/6.6	9.8/8.0/7.2	12.1/7.5/6.8	12.8/8.4/7.5
Fan speed			steps	5 steps, silent and auto			
Sound pressure level	cooling	H/L/SL	dB(A)	37/31/28	38/32/29	47/39/36	48/41/39
	heating	H/L/SL	dB(A)	37/31/29	39/33/30	46/35/33	47/37/34
Sound power level	cooling	H	dB(A)	53	54	63	64
Piping connections	liquid	mm	ø6.4				
	gas	mm	ø9.5		ø12.7		
	drain	mm	ø18.0				
Heat insulation			Both liquid and gas pipes				
Power supply		VM	1~, 220-240/220-230V, 50/60Hz				
Infrared remote control			ARC433A5				

FVXS-F

Floor standing unit



Comfort

- › Vertical auto swing and wide angle louvers ensure that warm air reaches the furthest corners of a room and increase the air flow coverage
- › Extremely quiet in operation

Filter

- › Titanium apatite photocatalytic air purification filter powerfully absorbs microscopic particles, decomposes odours and even deactivates bacteria and viruses

Energy efficient

- › ECONO mode decreases the power consumption so that other appliances that need large power consumption can be used

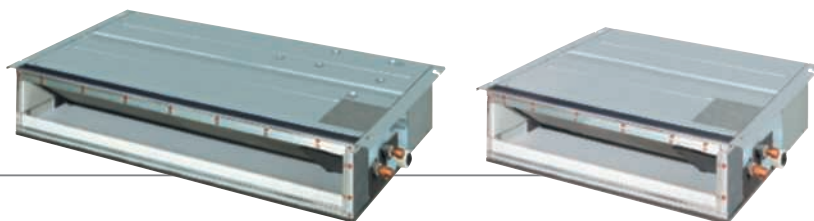
Flexible installation

- › Can be used for floor standing or lower wall applications
- › As a floor standing model, it can be semi or fully recessed without loss of capacity

HEAT PUMP (air cooled)				FVXS25F	FVXS35F	FVXS50F
Dimensions	HxWxD	mm		600x700x210		
Weight		kg		14		
Front panel colour				White		
Air flow rate	cooling	H/L/SL	m³/min	8.2/4.8/4.1	8.5/4.9/4.5	10.7/7.8/6.6
	heating	H / L / SL	m³/min	8.8/5.0/4.4	9.4/5.2/4.7	11.8/8.5/7.1
Fan speed			steps	5 steps, silent and auto		
Sound pressure level	cooling	H/L/SL	dB(A)	38/26/23	39/27/24	44/36/32
	heating	H/L/SL	dB(A)	38/26/23	39/27/24	45/36/32
Sound power level	cooling	H	dB(A)	54	55	56
Piping connections	liquid		mm	ø6.4		
	gas		mm	ø9.5	ø9.5	ø12.7
	drain		mm	ø20.0		
Heat insulation				Both liquid and gas pipes		
Power supply			VM	1~, 220-240V, 50Hz		
Infrared remote control				ARC452A1		

FDXS-E/C

Slim concealed ceiling unit



Comfort

- › Leaves maximum floor and wall space for furniture, decoration and fittings
- › Extremely quiet in operation

Filter

- › Standard suction filter removes airborne dust particles to ensure a steady supply of clean air

Energy efficient

- › Home leave operation saves energy during absence

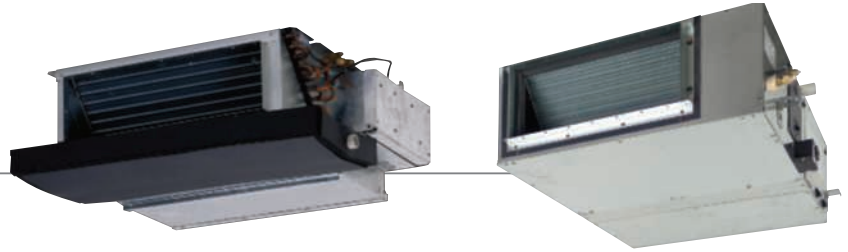
Flexible installation

- › Can easily be installed in rooms with a false ceiling of only 240mm depth
- › A standard external static pressure (ESP) of 40 Pa, makes it possible to use flexible ducts of varying lengths

HEAT PUMP (air cooled)				FDXS25E	FDXS35E	FDXS50C	FDXS60C
Dimensions	HxWxD		mm	200x700x620		200x1,100x620	
Weight			kg	21		27	30
Fan speed			steps	5 steps, silent and auto		5 steps, silent and auto	
Air flow rate	cooling	H/L/SL	m³/min	8.7/7.3/6.2	8.7/7.3/6.2	12.0/10.0/8.4	16.0/13.5/11.2
	heating	H/L/SL	m³/min	8.7/7.3/6.2	8.7/7.3/6.2	12.0/10.0/8.4	16.0/13.5/11.2
Sound pressure level	cooling	H/L/SL	dB(A)	35/31/29	35/31/29	37/33/31	38/34/32
	heating	H/L/SL	dB(A)	35/31/29	35/31/29	37/33/31	38/34/32
Sound power level	cooling	H	dB(A)	53	53	55	56
Piping connections	liquid		mm	ø6.4		ø6.4	
	gas		mm	ø9.5		ø12.7	
	drain	ID	mm	ø20.0		ø20.0	
		OD	mm	ø26.0		ø26.0	
Heat insulation				Both liquid and gas pipes		Both liquid and gas pipes	
Power supply			V1 / VM	1~, 220-240, 50Hz		1~, 220-240/220-230V, 50/60Hz	
Infrared remote control				ARC433A7		ARC433A7	

FDBQ-B/FBQ-B

Concealed ceiling unit



Comfort

- › Leaves maximum floor and wall space for furniture, decoration and fittings
- › Blends unobtrusively with any interior décor
- › The position of the individual air discharge grilles can be altered, enabling a uniform temperature, even in irregularly shaped rooms
- › Optimum air distribution
- › Quiet in operation

Energy efficient

- › Home leave operation saves energy during absence

Slim design for flexible installation

- › Fits flush into narrow ceiling voids
- › Only air suction and discharge grilles are visible
- › The maximum external static pressure (ESP) is 88Pa for FBQ

HEAT PUMP (air cooled)				FDBQ25B	FBQ35B	FBQ50B	FBQ60B		
Dimensions		HxWxD		mm	230x652x502	300x700x800		300x1,000x800	
Weight				kg	17	30	31	41	
Fan speed				steps	2 steps (direct drive)				
Air flow rate	cooling	H/L	m³/min	6.5/5.2	11.5/9	14/10	19/14		
	heating	H/L	m³/min	6.5/5.2	11.5/9	14/10	19/14		
Sound pressure level	cooling	H/L	dB(A)	35/28	33/29	33/29	34/30		
	heating	H/L	dB(A)	35/29	33/29	33/29	34/30		
Sound power level	cooling	H/L	dB(A)	55/49	52/*	53/*	60/*		
Piping connections		liquid		mm	ø6.4				
		gas		mm	ø9.5		ø12.7		
		drain	ID	mm	ø21.6	ø25.0			
		(VP 20)	OD	mm	ø27.2	ø32.0			
Heat insulation				Both liquid and gas pipes					
Power supply			V1	1~, 230V, 50Hz					
Wired remote control				BRC1D52					
DECORATION PANEL				Not applicable		BYBS45D		BYBS71D	
Dimensions		HxWxD		mm	Not applicable		55x880x500	55x1,100x500	
Weight				kg	Not applicable		3.5	4.5	
Colour				Not applicable					White

* This information was not available at the time of publication.

FCQ-C

Round flow cassette



Comfort

- › Year round comfort results from 360° radial air discharge with:
 - uniform air flow distribution
 - uniform temperature distribution
- › Quiet in operation
 - Less draughts and lower air velocities as a result of increased horizontal airflow

Energy saving

- › Highest COP values
- › Inverter technology

Flexible installation

- › Very low minimum installation height of 214 mm
- › Standard connection to D3-net without the need of an adapter PCB
- › Easy condensate drain check

HEAT PUMP (air cooled)				FCQ35C	FCQ50C	FCQ60C
Dimensions	HxWxD	unit	mm	204x840x840		
	HxWxD	decoration	mm	50x950x950		
Weight		unit	kg	19		
		decoration	kg	5.5		
Colour		decoration panel		Pure White (RAL 9010)		
Air flow rate	cooling	H / L	m³/min	10.5/8.5	12.5/8.5	13.5/8.5
	heating	H / L	m³/min	12.5/10.0	12.5/8.5	13.5/8.5
Fresh Air	Max. fresh air intake		%	20.0	20.0	20.0
	Max. fresh air intake		m³/min	2.7	2.7	3.0
Fan speed			steps	2		
Sound pressure level	cooling	H / L	dB(A)	31/27	31/27	33/28
	heating	H / L	dB(A)	31/27	31/27	33/28
Sound power level	cooling	H	dB(A)	49	49	51
Piping connections		liquid	OD mm	ø6.25 (flare connection)		
		gas	OD mm	ø9.52 (flare connection)	ø12.7 (flare connection)	
		drain (VP25)	ID mm	ø25.0		
			OD mm	ø32.0		
Heat insulation				Foamed Polystyrene / Foamed Polyethylene		
Power supply				1~, 220-240V, 50/60Hz		
Infrared remote control				BRC1D52		

FFQ-B

4-Way blow ceiling mounted cassette (600mm x 600mm)



Comfort

- › Automatic air flow director ensures uniform air flow and temperature distribution
- › Excellent low draught characteristics and anti-ceiling soiling technology
- › Extremely quiet in operation
- › Modern style decoration panel in white (RAL9010)

Energy efficient

- › Home leave operation saves energy during absence

Flexible installation and easy to maintain

- › Due to the compact casing, it matches standard architectural modules of 600 x 600mm, therefore ceiling tile cutting is no longer necessary
- › Since the switch box is located inside the unit, it is easy to access from below for maintenance without removing ceiling tiles
- › Possibility to shut off one or two flaps for easy installation in corners

HEAT PUMP (air cooled)				FFQ25B	FFQ35B	FFQ50B	FFQ60B
Dimensions		HxWxD	mm	286x575x575			
Weight			kg	17.5			
Fan speed				2 steps (direct drive)			
Air flow rate	cooling	H/L	m³/min	9/6.5	10/6.5	12/8	15/10
	heating	H/L	m³/min	9/6.5	10/6.5	12/8	15/10
Sound pressure level	cooling	H/L	dB(A)	29.5/24.5	32/25	36/27	41/32
	heating	H/L	dB(A)	29.5/24.5	32/25	36/27	41/32
Sound power level	cooling	H	dB(A)	46.5	49	53	58
Piping connections		liquid	mm	ø6.4			
		gas	mm	ø9.5		ø12.7	
		drain	mm	ø20.0			
Heat insulation				Both liquid and gas pipes			
Power supply			V1	1~, 230V, 50Hz			
Infrared remote control	cooling only			BRC7E531			
	heat pump			BRC7E530			
Wired remote control				BRC1D52			
DECORATION PANEL				BYFQ60B			
Dimensions		HxWxD	mm	55x700x700			
Weight			kg	2.7			
Colour				White (RAL9010)			

FHQ-B

Ceiling suspended unit



Comfort

- › Air flow distribution for ceiling heights up to 3.8m without loss of capacity
- › A comfortable air flow in all directions thanks to an air flow pattern of 100°

Flexible installation and easy to maintain

- › The ideal solution for installation without false ceiling since they are installed directly against the ceiling
- › The reduced lateral servicing space enables the unit to be easily installed in corners and narrow spaces on walls and ceilings

HEAT PUMP (air cooled)				FHQ35B	FHQ50B	FHQ60B	
Dimensions		HxWxD		mm	195x960x680		
Weight				kg	24	25	
Casing colour				White			
Fan speed				steps	2 steps		
Air flow rate	cooling	H/L		m³/min	13/10	13/10	
	heating	H/L		m³/min	13/10	13/10	
Sound pressure level	cooling	H/L		dB(A)	37/32	38/33	
	heating	H/L		dB(A)	37/32	38/33	
Sound power level	cooling	H/L		dB(A)	53/48	54/49	
Piping connections		liquid		mm	ø6.4		
		gas		mm	ø9.5	ø12.7	
		drain	ID	mm	ø20.0		
		(VP 20)	OD	mm	ø26.0		
Heat insulation				Both liquid and gas pipes			
Power supply				V1	1~, 230V, 50Hz		
Infrared remote control	cooling only			BRC7E66			
	heat pump			BRC7E63			
Wired remote control				BRC1D52			

Outdoor UNIT



RMXS-EV



HEAT PUMP				RMXS112EV	RMXS140EV	RMXS160EV
Equivalent horsepower			HP	4	5	6
Cooling capacity (1)			kW	11.2	14.0	15.5
Heating capacity (1)			kW	12.5	16.0	17.5
Nominal input	Cooling		kW	3.50	5.09	5.40
	Heating		kW	3.93	5.21	5.43
EER (1)	Cooling			3.20	2.75	2.87
COP (1)	Heating			3.18	3.07	3.22
Maximum number of connectable indoor units (BP to be connected)				6	8	9
Total capacity index of i/u to be connected (max./min.)				(50/130)	(62.5/162.5)	(70/182)
Capacity control				24 to 100		
Power supply			V3	1~, 230V, 50Hz		
Dimensions (HxWxD)			mm	1,345x900x320		
Weight			kg	120		
Casing				Painted galvanised steel plate		
Colour				Daikin white		
Sound pressure level	cooling/heating		dB(A)	51/53	52/54	54/55
Sound power level			dB(A)	67	68	70
Fan	Type			Non-symmetric waffle louvre		
	Air flow	cooling	m³/min	106	106	106
	rate	heating	m³/min	102	105	105
Refrigerant	Name			R-410A		
	Charge		kg	4.0	4.0	4.0
	Control			Electronic expansion valve		
Refrigerant oil	Type			DAPHNE FVC68D		
	Charge		l	1.5	1.5	1.5
Compressor	Type			Hermetically sealed scroll type		
	Starting method			Direct on line		
Piping connections	Liquid		mm	ø9.5 (flare)	ø9.5 (flare)	ø9.5 (flare)
	Gas		mm	ø19.1 (brazed)	ø19.1 (brazed)	ø19.1 (brazed)
Piping length	System total		m	115	135	145
	Total	OU - BP	m	55		
		BP - IU	m	60	80	90
		BP - IU	m	15		
Height difference	OU - BP		m	30		
			m	30		
	BP - BP/IU - IU		m	15		
			m	15		
Operation range	Cooling		°CDB	-5° ~ 46°		
	Heating		°CWB	-15° ~ 20°		
Safety devices				High pressure switch, fan motor thermal protector, inverter overload protector, PC board fuse		

(1): Specifications are with Indoor unit & BP-unit included. EER/COP values are based on 100% connection ratio with wall mounted units. RMXS112: FTXS50 + FTXS60; RMXS140: 2xFTXS71; RMXS160: 2xFTXS50 + FTXS60. The specifications are based on eurovent 2005 tolerances (CAP:>95%; EER/COP:>92%).
 (2): The local piping length between 1st branch and indoor unit should be less than 40m.

BRANCH PROVIDER				BPMKS967B2	BPMKS967B3
Connectable indoor units			units	1~2	1~3
Max. indoor unit connectable capacity				14.2	20.8
Max. connectable combination				71+71	60+71+71
Power input			kW	*	
Dimensions			HxWxD	180x294x350	
Weight			kg	7	8

Accessories

INDOOR UNITS

FTXG-E & CTXG-E	25	35	50
Titanium apatite photocatalytic air purification filter (with frame)		KAF952B41	
Titanium apatite photocatalytic air purification filter (without frame)		KAF952B42	
Anti-theft protection for remote control		KKF917AA4	

FTXS-G	20	25	42	35	50
Titanium apatite photocatalytic air purification filter			KAF968A42		
Anti-theft protection for remote control			KKF910A4		

FTXS-F	60	71
Titanium apatite photocatalytic air purification filter without frame (1)		KAF952B42
Anti-theft protection for remote control		KKF917AA4
(1) standard accessory		

FLXS-B	25	35	50	60
Photocatalytic deodorising filter (with frame)		KAZ917B41		
Photocatalytic deodorising filter (without frame)		KAZ917B42		
Air purification filter (with frame)		KAF925B41		
Air purification filter (without frame)		KAF925B42		
Anti-theft protection for remote control		KKF917AA4		

FVXS-F	25	35	50
Titanium apatite photocatalytic air-purifying filter without frame (1)		KAF968A42	
Anti-theft protection for remote control		KKF936A4	
(1) standard accessory			

FDXS-E/C	25	35	50	60
Anti-theft protection for remote control	KKF917AA4		KKF917AA4	
Suction grille	KDGF19A45		KDGF19A45	

FBQ-B	35	50	60
Decoration panel	BYBS45D		BYBS71D
Service access panel	KTBJ25K56W		KTBJ25K80W
High-efficiency filter 65% (colorimetric method)*1	KAFJ252L56		KAFJ252L80
High-efficiency filter 90% (colorimetric method)*1	KAFJ253L56		KAFJ253L80
Filter chamber for bottom suction	KAJ25L56D		KAJ25L80D
Filter chamber for rear suction	KAJ25L56B		KAJ25L80B
Air suction canvas	KSA-25K56		KSA-25K80
Blind board/screening door	KBBJ25K56		KBBJ25K80
Air discharge adapter for round duct	KDAJ25K56		KDAJ25K71

*1 If installing a high-efficiency filter on the unit, an assembly chamber for either bottom or rear suction is required.

FCQ-C	35	50	60
Decoration panel		BYCQ140CW1	
Replacement long-life filter		KAFP551KA160	
Fresh air intake kit (min.20% fresh air)		KDDQ55C 140	
Sealing member of air discharge outlet		KDBH55C 140	

FFQ-B	25	35	50	60
Decoration panel		BYFQ60B		BYFQ60B
Long-life filter		KAFQ441BA60		KAFQ441BA60
Fresh air intake kit	Direct installation type	KDDQ44XA60		KDDQ44XA60
Sealing member of air discharge outlet		KDBH44BA60		KDBH44BA60
Panel spacer		KDBQ44B60		KDBQ44B60

FHQ-B	35	50	60
Replacement long-life filter		KAF501DA56	KAFJ501DA80
Drain-up kit		KDU50M60	
L-type piping kit (upward direction)	KHFP5M35		KHFP5M63

OUTDOOR UNIT - REFNET - BRANCH PROVIDER

RMXS-EV	
Drain plug*	KKPJ5F180

REFNET	
Refnet joint	KHRQ22M20TA

BRANCH PROVIDER	
Branch provider for 2 rooms	BPMKS967B2
Branch provider for 3 rooms	BPMKS967B3

*1 drain plug kit is included with the unit

CONTROL SYSTEMS

INDOOR UNITS

FTXG-E & CTXG-E		20	25	35	50
Wiring adapter for time clock / remote control (1)	normal open contact			KRP413A1S	
	normal open pulse contact			KRP413A1S	
Centralised control board	up to 5 rooms (2)			KRC72	
Central remote control				DCS302C51	
Unified ON/OFF control				DCS301B51	
Schedule timer				DST301B51	
Interface adapter (3)				KRP928A2S	

(1) Wiring adapter is supplied by Daikin. Timer and other devices: field supply.
 (2) Wiring adapter is also required for each indoor unit.
 (3) For DIII-NET adapter

FTXS-G		20	25	42	35	50
Titanium apatite photocatalytic air purification filter				KAF968A42		
Anti-theft protection for remote control				KKF910A4		

(1) Wiring adapter is supplied by Daikin. Timer and other devices: field supply.
 (2) Wiring adapter is also required for each indoor unit.
 (3) For DIII-NET adapter

FTXS-F		60		71	
Wiring adapter for time clock / remote control (1)	normal open contact			KRP413AA1S	
	normal open pulse contact			KRP413AA1S	
Centralised control board	up to 5 rooms (2)			KRC72A	
Central remote control				DCS302CA51	
Unified ON/OFF control				DCS301BA51	
Schedule timer				DST301BA51	
Interface adapter (3)				KRP928BA2S	

(1) Wiring adapter is supplied by Daikin. Timer and other devices: field supply.
 (2) Wiring adapter is also required for each indoor unit.
 (3) For DIII-NET adapter

FLXS-B		25	35	50	60
Wiring adapter for time clock / remote control (1)	normal open contact			KRP413A1S	
	normal open pulse contact			KRP413A1S	
Centralised control board	up to 5 rooms (2)			KRC72	
Central remote control				DCS302C51	
Unified ON/OFF control				DCS301B51	
Schedule timer				DST301B51	
Interface adapter (3)				KRP928A2S	

(1) Wiring adapter is supplied by Daikin. Timer and other devices: field supply.
 (2) Wiring adapter is also required for each indoor unit.
 (3) For DIII-NET adapter

FVXS-F		25	35	50
Centralised control board	up to 5 rooms		KRC72(A)	
Wiring adapter normal open / normal open pulse contact	normal open		KRP413A(A)1S	
	normal open pulse contact		KRP413A(A)1S	
Interface adapter (1)			KRP928B(A)2S	
Central remote control			DCS302CA61	
Unified ON / OFF control			DCS301BA61	
Schedule timer			DST301BA61	
(1) For DIII-NET adapter				

FDXS-E/C		25	35	50	60
Wiring adapter for time clock / remote control (1)	normal open contact	KRP413A1S		KRP413A1S	
	normal open pulse contact	KRP413A1S		KRP413A1S	
Centralised control board	up to 5 rooms (2)	KRC72		KRC72	
Central remote control		DCS302C51		DCS302C51	
Unified ON / OFF control		DCS301B51		DCS301B51	
Schedule timer		DST301B51		DST301B51	
Interface adapter (3)		KRP928A2S		KRP928A2S	
(1) Wiring adapter is supplied by Daikin. Timer and other devices: field supply.					
(2) Wiring adapter is also required for each indoor unit.					
(3) For DIII-NET adapter					

FDBQ-B		25
Wired remote control		BRC1D52
Adapter for wiring (hour meter) (1)		EKRP1B2
Remote ON/OFF, forced OFF		EKRORO
(1) Possibility to connect an hour meter (field supply). This part should not be installed inside the equipment.		

FBQ-B		35	50	60
Wired remote control			BRC1D52	
Centralised remote control			DCS302C51	
Unified ON / OFF control			DCS301B51	
Schedule timer			DST301B51	
Adapter for wiring			KRP1B54	
Adapter for external ON / OFF and monitoring			KRP4A51	
Interface adapter for Sky Air			DTA112B51	
Remote ON / OFF, forced OFF			EKRORO	
Option PCB for external electrical heater, humidifier and/or hour meter (1)			EKRP1B2	
(1) Electrical heater, humidifier and hour meter are field supply. These parts should not be installed inside the equipment.				

FCQ-C		35	50	60
Wired remote control			BRC1D528	
Infrared remote control	cooling only		BRC7F533F	
	heat pump		BRC7F532F	
Centralised remote control			DCS302CA51	
Unified ON / OFF control			DCS301BA51	
Schedule timer			DST301BA51	
Wiring adapter for electrical appendices			KRP1BA57 / KRP4AA53	
Wiring adapter (hour meter)			EKRP1C11	
Installation box for adapter PCB			KRP1H98	
Remote ON / OFF			EKRORO2	
Remote sensor			KRCS01-4	
Fixing box			KJB212AA	

FFQ-B	25	35	50	60
Wired remote control			BRC1D52	
Infrared remote control	cooling only / heat pump		BRC7E531 / BRC7E530	
Centralised remote control			DCS302C51	
Unified ON/OFF control			DCS301B51	
Schedule timer			DST301B51	
Adapter for wiring (1)			KRP1B57	
Adapter for external ON/OFF and monitoring (1)			KRP4A53	
Adapter for wiring (hour meter) (2)			EKRP1B2	
Remote sensor			KRCS01-1	
Installation box for adapter PCB			KRP1BA101	
Interface adapter for Sky Air			DTA112B51	
Remote ON/OFF, forced OFF			EKRORO	

(1) Installation box for adapter PCB (KRP1B101) is necessary.

(2) Possibility to connect an hour meter (field supply). This part should not be installed inside the equipment.

FHQ-B	35	50	60
Wired remote control		BRC1D52	
Infrared remote control	cooling only / heat pump	BRC7E66 / BRC7E63	
Centralised remote control		DCS302C51	
Unified ON/OFF control		DCS301B51	
Schedule timer		DST301B51	
Adapter for wiring		KRP1B54	
Adapter for external ON / OFF and monitoring (1)		KRP4A52	
Adapter for wiring (hour meter) (2)		EKRP1B2	
Interface adapter for Sky Air		DTA112B51	
Installation box for adapter PCB		KRP1C93	
Remote ON/OFF, forced OFF		EKRORO	

(1) Installation box for adapter PCB (KRP1C93) is necessary

(2) Possibility to connect an hour meter (field supply). This part should not be installed inside the equipment

MEASURING CONDITIONS

HEAT PUMP

1) nominal cooling capacities measured at:

indoor temperature 27°CDB/19°CWB

outdoor temperature 35°CDB

equivalent piping length:

outdoor-BP 5m

BP-indoor 3m

level difference 0m

2) nominal heating capacities measured at:

indoor temperature 20°CDB

outdoor temperature 7°CDB/6°CWB

equivalent piping length:

outdoor-BP 5m

BP-indoor 3m

level difference 0m

3) capacities are net, including a deduction for cooling (an addition for heating) for indoor fan motor heat

4) sound pressure level measured at a certain distance from the unit





In all of us,
a green heart



Daikin's unique position as a manufacturer of air conditioning equipment, compressors and refrigerants has led to its close involvement in environmental issues.

For several years Daikin has had the intention to become a leader in the provision of products that have limited impact on the environment.

This challenge demands the eco design and development of a wide range of products and an energy management system, resulting in energy conservation and a reduction of waste.



Daikin Europe N.V. is approved by LRQA for its Quality Management System in accordance with the ISO9001 standard. ISO9001 pertains to quality assurance regarding design, development, manufacturing as well as to services related to the product.



ISO14001 assures an effective environmental management system in order to help protect human health and the environment from the potential impact of our activities, products and services and to assist in maintaining and improving the quality of the environment.

The present leaflet is drawn up by way of information only and does not constitute an offer binding upon Daikin Europe N.V.. Daikin Europe N.V. has compiled the content of this leaflet to the best of its knowledge. No express or implied warranty is given for the completeness, accuracy, reliability or fitness for particular purpose of its content and the products and services presented therein. Specifications are subject to change without prior notice. Daikin Europe N.V. explicitly rejects any liability for any direct or indirect damage, in the broadest sense, arising from or related to the use and/or interpretation of this leaflet. All content is copyrighted by Daikin Europe N.V.



Daikin units comply with the European regulations that guarantee the safety of the product.



Daikin Europe N.V. participates in the Eurovent Certification Programme for Air Conditioners (AC), Liquid Chilling Packages (LCP) and Fan Coil Units (FC); the certified data of certified models are listed in the Eurovent Directory. Multi units are Eurovent certified for combinations up to 2 indoor units.

DAIKIN EUROPE N.V.

Naamloze Vennootschap
Zandvoordestraat 300
B-8400 Oostende, Belgium
www.daikin.eu
BTW: BE 0412 120 336
RPR Oostende



Mixed Sources

Product group from well-managed
forests and other controlled sources
www.fsc.org Cert no. SGS-COC-003924
© 1996 Forest Stewardship Council

Daikin products are distributed by:



EPCEN08-015